



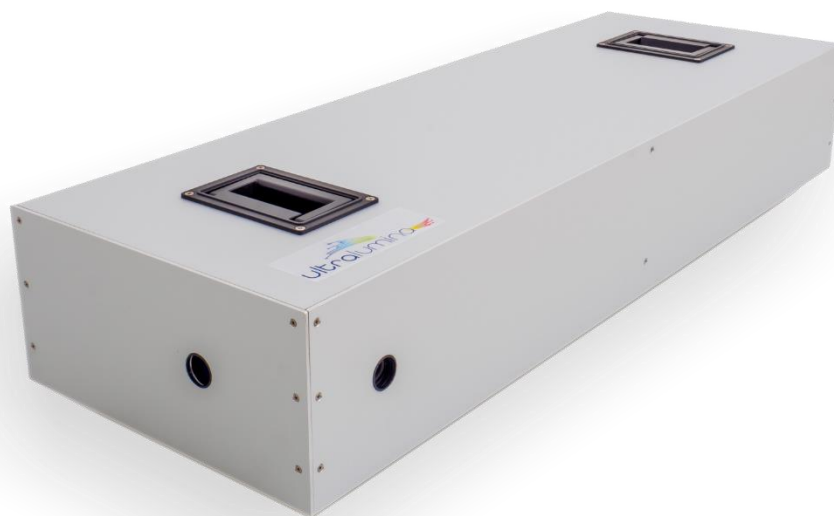
Extremely bright deep UV supercontinuum source

The DUV supercontinuum source consists of a 900×300×150 mm optical converter containing a Hollow-Core Photonic Crystal Fibre, gas management and optics. An external fs-pump source can be supplied by ultralumina or the user. Nonlinear and dispersive effects results in a frequency conversion of the launched pump pulse into the deep UV.

Benefits:

- Dynamic control of gas type and pressure which allows to engineer the synthesised pulse spectrum or duration
- Spatially coherent, broadband light from 240 nm to above 1800 nm
- Unmatched spectral radiance ($> 10^6$ mW/nm×sr×mm²), exceeding state-of-the art laser-driven plasma lamps by more than five orders of magnitude
- Tunable DUV emission from 180 nm to the VIS with mW/nm spectral densities
- Convenient tunable source for optical metrology or time-resolved fluorescence detection

Product picture:



Contact:



Ultralumina, Erlangen, Germany
+4991317133263
sales@ultralumina.com
<https://www.ultralumina.com/>